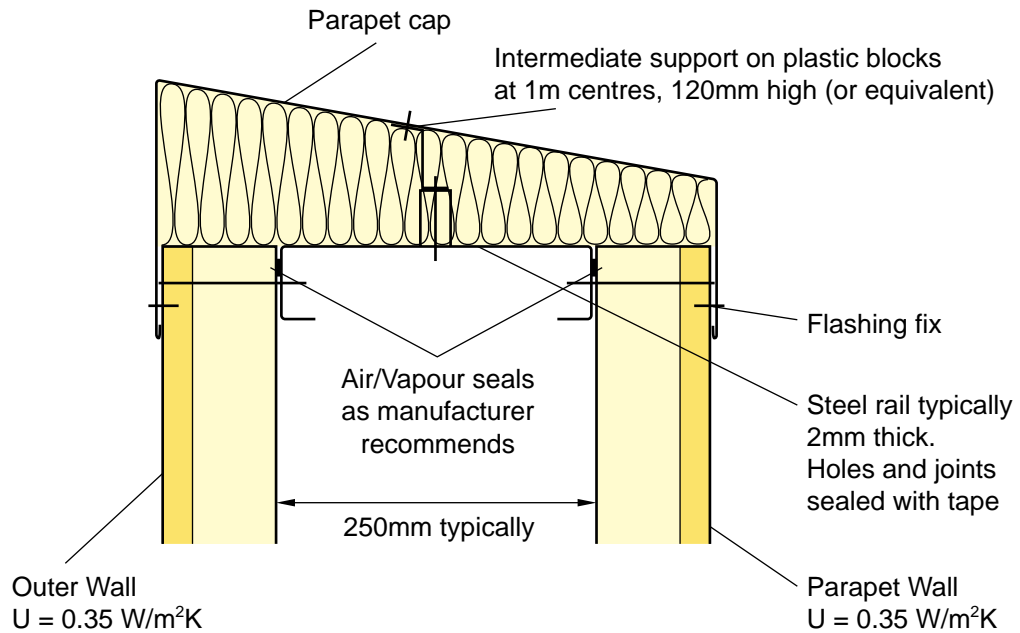


Parapet Top - Composite Panels



Key Features

- Liner terminates at top of cladding rail and the rail is sealed.
- Liner is air and vapour sealed to flanges of cladding rail, to manufacturers' recommendations.
- Parapet cap made from 0.7 mm steel (or equivalent in aluminium etc).
- Cap to slope to the inside, 6° minimum.
- Insulation under cap to be at least the thickness/type used on walls. i.e. 120 mm (approx) for glass fibre, 60 mm (approx) for urethane.
- If quilt is used on top of the rail, an intermediate spacer is required. (Quilt preferred, as gaps can be filled).
- Cap fixed to cladding, with seals, fillers etc. as normal.
- Butt strap joints to manufacturers' details.
- Thermal bridging will be low.